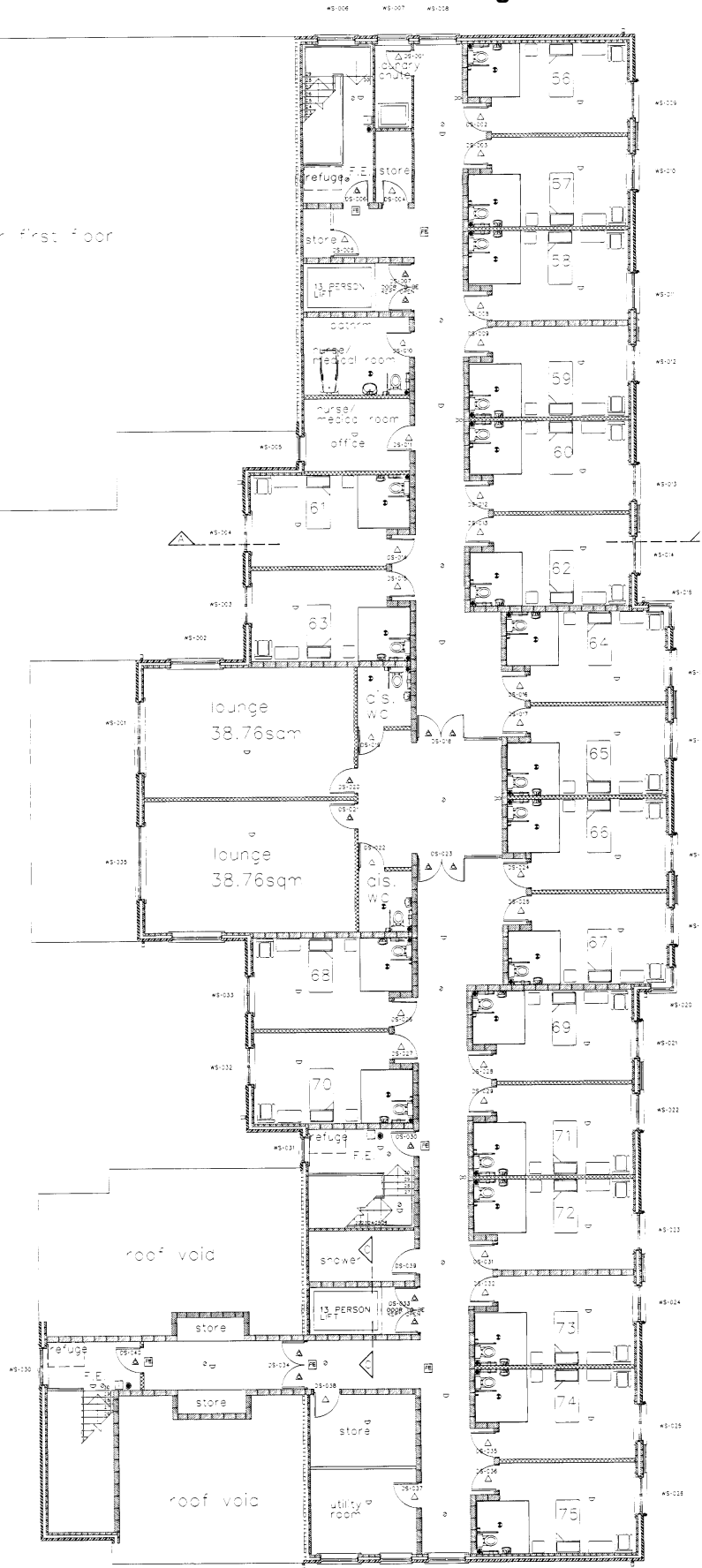


Nursing Home Second Floor Plan



LEGEND - FIRE SAFETY
 SPECIFICATION FOR TYPES

| DOOR FIRE RATING LEGEND | |
|---|--|
| 0.5 hr | △ half hour fire resisting door FD30 |
| 1 hr | △ half hour fire resisting door FD30 with self-closer and intumescent smoke seals |
| 1 hr | △ half hour fire resisting door FD30 with vision panel (see Code M Reg 9), self-closer and intumescent smoke seals |
| Access doors in ducts, plant room doors and store doors to be fitted with Fire Door - Keep Locked Shut Signs. | |
| Fire Exit doors to be fitted with Panic Fasteners to comply with BS EN 112. | |
| socket outlets for lighting should be located to that side as Building Regulations | |
| outlets for lighting should be located 200mm above R.L. and security systems/controls supplied by specialist. | |

WALLS

Early A&J - 100mm solid brick (11mm) 60m Fire Resistance
 150mm wide brick (250-300kg/m³) and of 1:3 job using 10mm mortar beds with 100mm plasterboard wallings

later A&J - 100mm Blockwork (11mm) 60m Fire Resistance
 J&J 100mm mortar beds with 100mm plasterboard wallings

Separating A&J - To be designed and supplied by specialist
 Bison System (up to 400kg/m³) 60m Fire Resistance
 150mm (up to 400kg/m³) studs of 500mm centres with 50mm spaced AFR 1000 white cavity and 10mm (up to 400kg/m³) plasterboard on one side. Finished with 2 x 12.5mm boards to both sides of the partition.
 Sound insulation 12 Rw @ 500Hz

Partitions - Bison System (up to 400kg/m³) 30m Fire Resistance
 150mm (up to 400kg/m³) studs of 500mm centres with 50mm spaced AFR 1000 white cavity. Finished with 12.5mm plasterboard to both sides of the partition.
 Sound insulation 12 Rw @ 500Hz